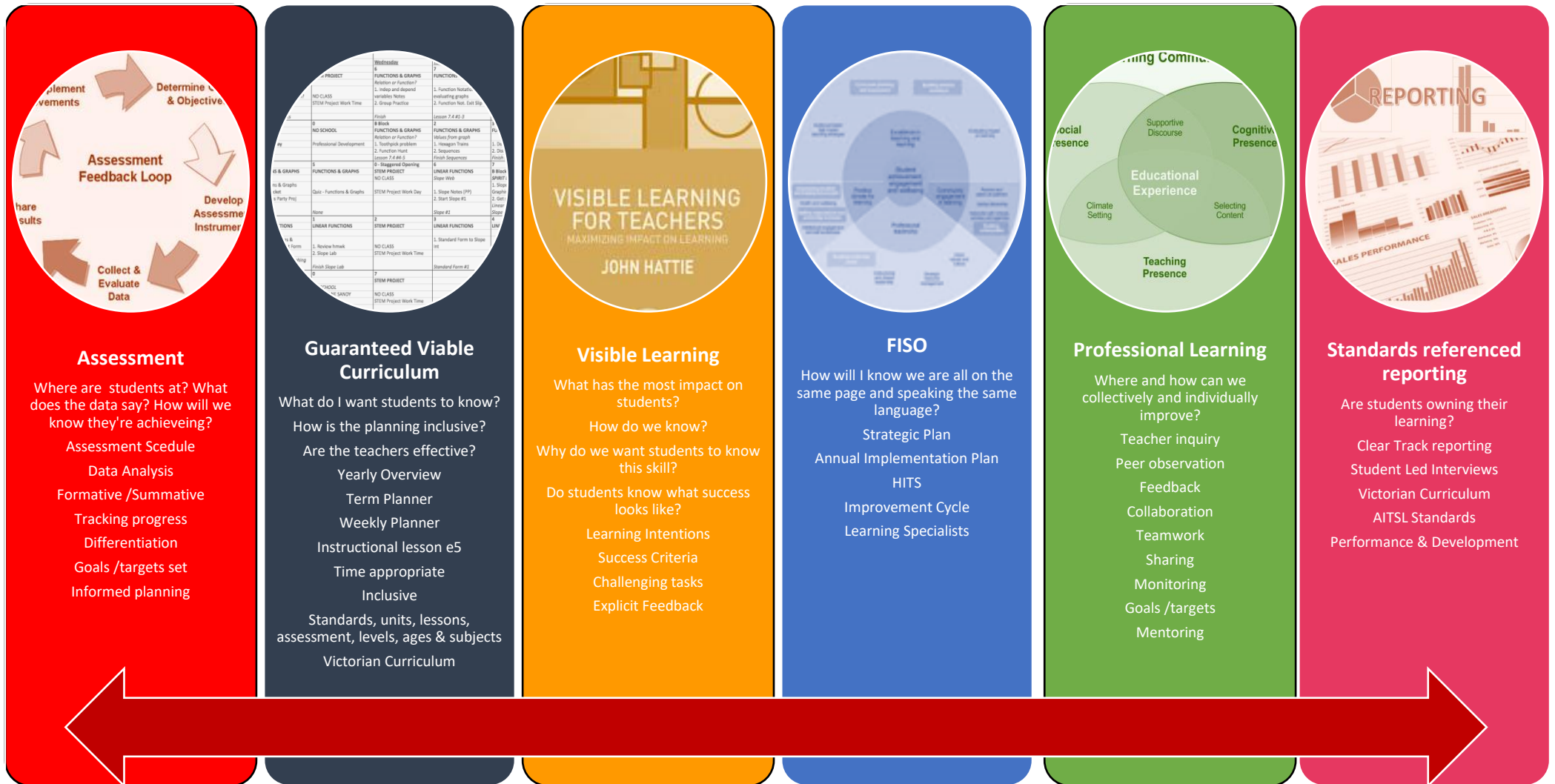


George Street Primary School Instructional Framework



George Street Primary School's framework for teaching and learning is a student centred model designed to promote problem solving through critical and creative thinking. Classroom instruction uses e5, with an explicit focus, followed by whole group, purposeful practice for new concepts and learning, before evaluation. Staff develop their practice through ongoing observation and feedback, professional learning, data analysis or goals from their performance and development plans. All planning is evaluated annually to ensure a guaranteed and viable curriculum that is visible, rigorous and based on student demands. Staff collaborate to plan a yearly overview, before implementing term, weekly and daily planners. Curriculum practices are whole school for shared language and understanding.